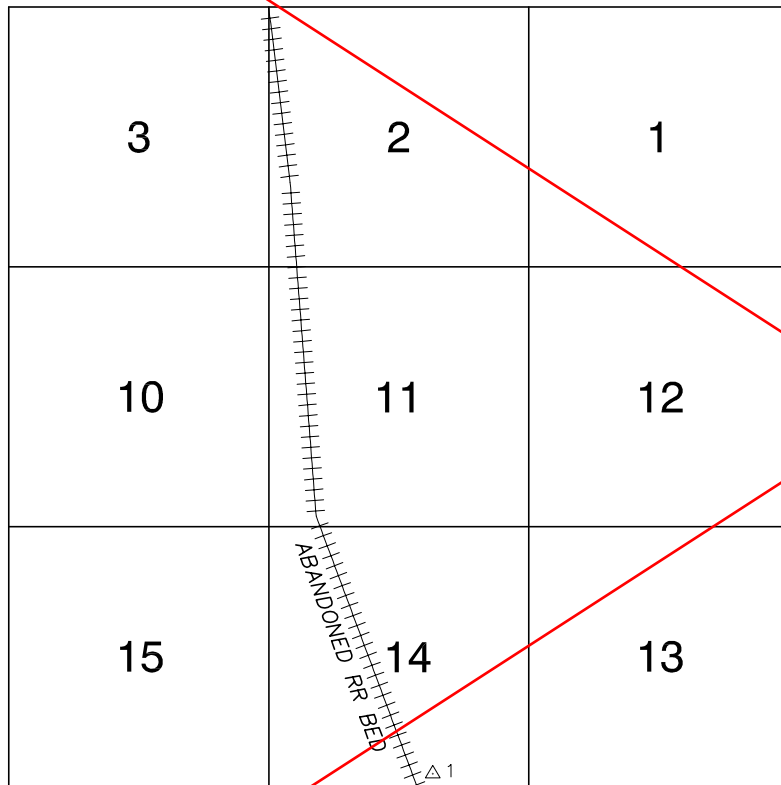


FOR REFERENCE ONLY

\*2018 BENCHMARK NETWORK ADJUSTMENT SUPERSEDES THE 2003 BENCHMARK BOOK

Township 18 South, Range 59 East  
Northeast Quarter



NORTH AMERICAN VERTICAL  
DATUM OF 1988  
- ALL ELEVATIONS IN METERS -

No.	STATION	ELEVATION (METERS)	DESCRIPTION
1	BM 111 1907	847.659	F N D 4" USGS BRASS CAP ON AN IRON PIPE 2' ABOVE THE GROUND, 90' SOUTHWEST OF A WOODEN POWER POLE WITH NO NUMBER, 5.0 MILES NORTHWEST OF THE INTERSECTION OF LOG CABIN WAY AND EL CAPITAN WAY ALONG AN ABANDONED RAILROAD BED.
2			
3			
4			
5			
6			
7			
8			
9			
10			
11			

CLARK COUNTY VERTICAL CONTROL v.2003

CLARK COUNTY SURVEYOR'S OFFICE  
5051 SOUTH PARADISE ROAD  
LAS VEGAS, NEVADA 89119  
(702) 455-0640

CONVERSION FACTOR:  
METERS X  $\left(\frac{3937}{1200}\right)$  = U.S. SURVEY FEET

REVISED 2003

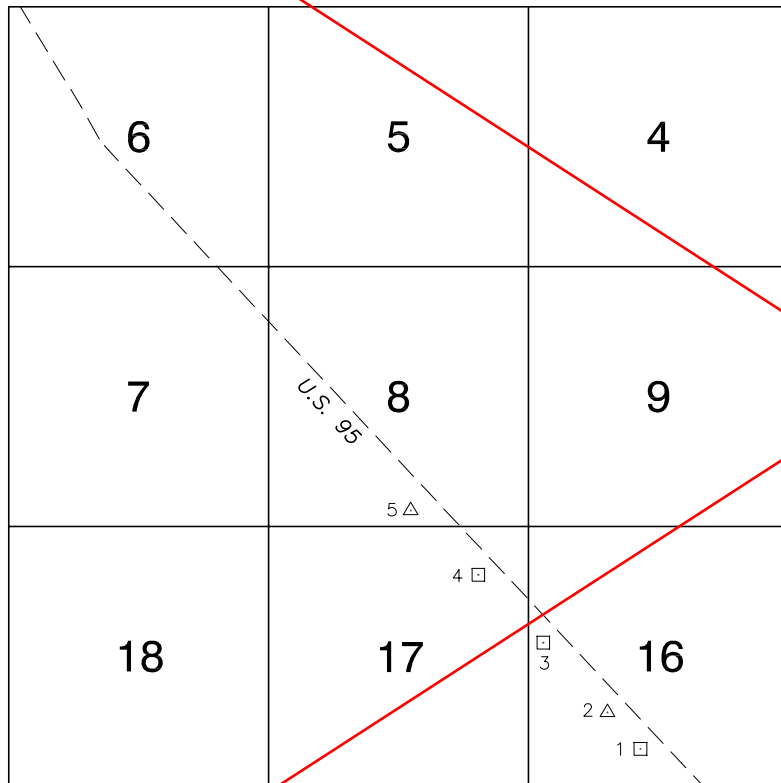
SHEET  
1 OF 1

18-59  
NE

FOR REFERENCE ONLY

\*2018 BENCHMARK NETWORK ADJUSTMENT SUPERSEDES THE 2003 BENCHMARK BOOK

Township 18 South, Range 59 East  
Northwest Quarter



NORTH AMERICAN VERTICAL  
DATUM OF 1988  
- ALL ELEVATIONS IN METERS -

No.	STATION	ELEVATION (METERS)	DESCRIPTION
1	0C89 16S6	896.662	F N D RIVET AND SQUARE ALUMINUM PLATE IN A CONCRETE HEADWALL, SOUTHWEST SIDE OF U.S. 95, 0.7 MILES NORTHWEST OF MILE MARKER 97.
2	Z 398 1980	895.701	F N D USC&GS BRASS CAP, IN A PVC WELL, 280' SOUTHWEST OF THE SOUTHWEST SIDE OF U.S. 95, 0.9 MILES NORTHWEST OF MILE MARKER 97 STAMPED "Z398 1980"
3	0C89 16W4	889.205	F N D RIVET AND SQUARE ALUMINUM PLATE IN A CONCRETE HEADWALL SOUTHWEST SIDE OF U.S. 95, 0.3 MILES NORTHWEST OF MILE MARKER 98.
4	0C89 17NE6	886.471	F N D RIVET AND SQUARE ALUMINUM PLATE IN A CONCRETE HEADWALL, SOUTHWEST SIDE OF U.S. 95, 0.6 MILES NORTHWEST OF MILE MARKER 98.
5	W 370 1963	882.096	F N D USC&GS BRASS CAP, IN A CONCRETE MONUMENT, 300' SOUTHWEST OF THE SOUTHWEST SIDE OF U.S. 95, 0.9 MILES NORTHWEST OF MILE MARKER 98 STAMPED "W370 1963"
6			
7			
8			
9			
10			
11			

CLARK COUNTY VERTICAL CONTROL v.2003

CLARK COUNTY SURVEYOR'S OFFICE  
5051 SOUTH PARADISE ROAD  
LAS VEGAS, NEVADA 89119  
(702) 455-0640

CONVERSION FACTOR:  
METERS X  $\left(\frac{3937}{1200}\right)$  = U.S. SURVEY FEET

REVISED 2003

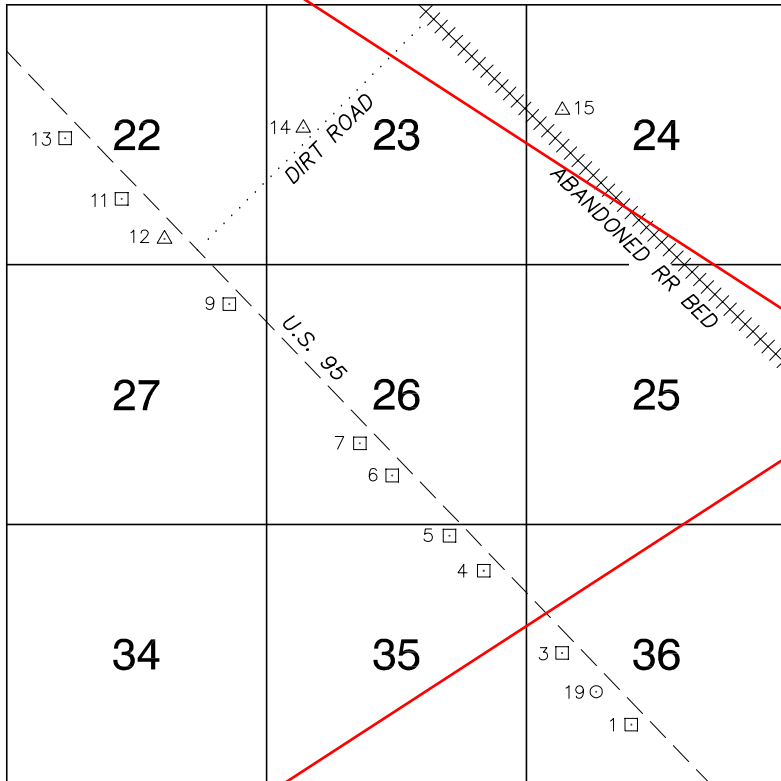
SHEET  
1 OF 1

18-59  
NW

FOR REFERENCE ONLY

\*2018 BENCHMARK NETWORK ADJUSTMENT SUPERSEDES THE 2003 BENCHMARK BOOK

Township 18 South, Range 59 East  
Southeast Quarter



NORTH AMERICAN VERTICAL  
DATUM OF 1988  
- ALL ELEVATIONS IN METERS -

No.	STATION	ELEVATION (METERS)	DESCRIPTION
1	0C89 36S6	876.238	F N D RIVET AND SQUARE ALUMINUM PLATE IN A CONCRETE HEADWALL, SOUTH SIDE OF U.S. 95, 0.6 MILES SOUTHEAST OF MILE MARKER 94.
2			LOST 2003
3	0C89 36W4	886.223	F N D RIVET AND SQUARE ALUMINUM PLATE IN A CONCRETE HEADWALL, SOUTH SIDE OF U.S. 95 AT MILE MARKER 94.
4	0C89 35NE6	890.514	F N D RIVET AND SQUARE ALUMINUM PLATE IN A CONCRETE HEADWALL, SOUTH SIDE OF U.S. 95, 0.6 MILES SOUTHEAST OF MILE MARKER 95.
5	0C89 35NNE6	892.928	F N D RIVET AND SQUARE ALUMINUM PLATE IN A CONCRETE HEADWALL, SOUTH SIDE OF U.S. 95, 0.4 MILES SOUTHEAST OF MILE MARKER 95.
6	0C89 26S6	896.499	F N D RIVET AND SQUARE ALUMINUM PLATE IN A CONCRETE HEADWALL, SOUTH SIDE OF U.S. 95, 23' NORTHWEST OF MILE MARKER 94 <sup>97</sup> .
7	0C89 26SW6	897.486	F N D RIVET AND SQUARE ALUMINUM PLATE IN A CONCRETE HEADWALL, SOUTH SIDE OF U.S. 95, 0.9 MILES SOUTHEAST OF MILE MARKER 96.
8			LOST 2003
9	0C89 27NE6	901.788	F N D RIVET AND SQUARE ALUMINUM PLATE IN A CONCRETE HEADWALL, SOUTHWEST SIDE OF U.S. 95, WEST CORNER OF THE INTERSECTION OF NUVAKAI BLVD. (EASTERLY) AND PAIUTE WAY. (WESTERLY).
10			LOST 2003
11	0C89 22S6	902.933	F N D RIVET AND SQUARE ALUMINUM PLATE IN A CONCRETE HEADWALL, SOUTHWEST SIDE OF U.S. 95, 0.4 MILES NORTHWEST OF MILE MARKER 96.

CLARK COUNTY VERTICAL CONTROL v.2003

CLARK COUNTY SURVEYOR'S OFFICE  
5051 SOUTH PARADISE ROAD  
LAS VEGAS, NEVADA 89119  
(702) 455-0640

CONVERSION FACTOR:  
METERS X  $\left(\frac{3937}{1200}\right)$  = U.S. SURVEY FEET

REVISED 2003

SHEET  
1 OF 2

18-59  
SE

FOR REFERENCE ONLY

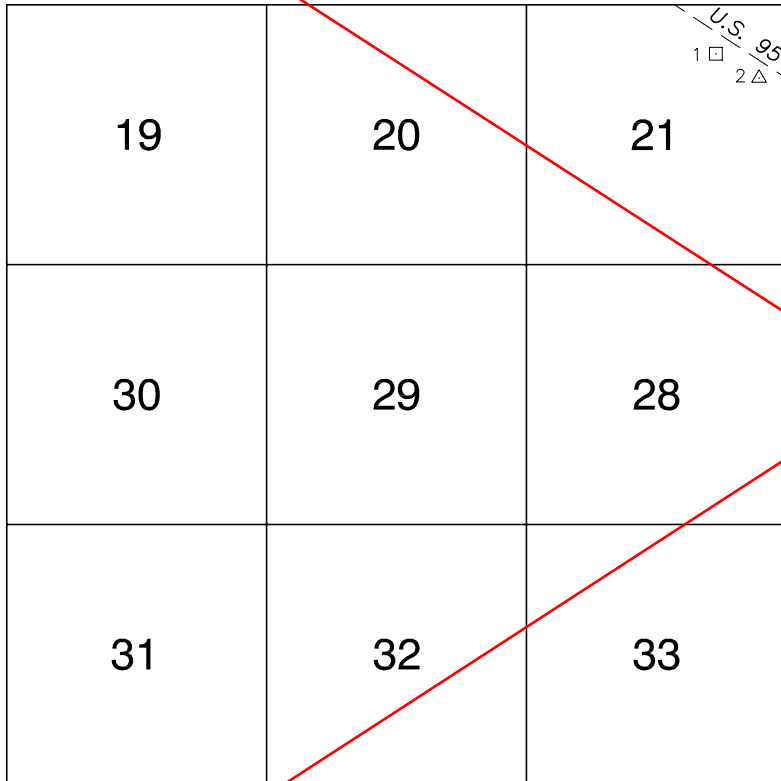
\*2018 BENCHMARK NETWORK ADJUSTMENT SUPERSEDES THE 2003 BENCHMARK BOOK

No.	STATION	ELEVATION (METERS)	DESCRIPTION	No.	STATION	ELEVATION (METERS)	DESCRIPTION
12	T 370 1963	904.358	F N D USC&GS BRASS CAP IN A CONCRETE MONUMENT, 200' SOUTHWEST OF U.S. 95, AT MILE MARKER 96 STAMPED "T370 1963"	25			
13	0C89 22W6	901.642	F N D RIVET AND SQUARE ALUMINUM PLATE IN A CONCRETE HEADWALL, SOUTHWEST SIDE OF U.S. 95 0.2 MILES SOUTHEAST OF MILE MARKER 97.	26			
14	S 370 1963	860.744	F N D USC&GS BRASS CAP IN A CONCRETE MONUMENT, NORTHEAST SIDE OF U.S. 95, 0.9 MILES NORTHEAST OF MILE MARKER 96, 40' NORTHWEST OF A DIRT ROAD, STAMPED "S370 1963"	27			
15	V 314 1950	842.177	F N D USC&GS B.C. IN A CONC. MON., 4.0 MILES NORTHWEST OF THE INTERSECTION OF LOG CABIN WY. & EL CAPITAN WY. ALONG AN ABANDONED RR BED, 130' NORTH OF A WOODEN POWER POLE(#2090?) STAMPED "V314 1950"	28			
16			LOST 2003	29			
17			LOST 2003	30			
18			LOST 2003	31			
19	7C89 36W6	883.136	F N D RIVET AND ROUND ALUMINUM PLATE IN A CONCRETE HEADWALL, SOUTH SIDE OF U.S. 95, 0.2 MILES SOUTHEAST OF MILE MARKER 94 <sup>95</sup>	32			
20				33			
21				34			
22				35			
23	<b>CLARK COUNTY VERTICAL CONTROL v.2003</b>						
24	CLARK COUNTY SURVEYOR'S OFFICE 5051 SOUTH PARADISE ROAD LAS VEGAS, NEVADA 89119 (702) 455-0640				CONVERSION FACTOR: METERS X $\left(\frac{3937}{1200}\right)$ = U.S. SURVEY FEET		
				REVISED 2003	SHEET 2 OF 2	<b>18-59</b> <b>SE</b>	

**FOR REFERENCE ONLY**

**\*2018 BENCHMARK NETWORK ADJUSTMENT SUPERSEDES THE 2003 BENCHMARK BOOK**

**Township 18 South, Range 59 East  
Southwest Quarter**



NORTH AMERICAN VERTICAL  
DATUM OF 1988  
- ALL ELEVATIONS IN METERS -

No.	STATION	ELEVATION (METERS)	DESCRIPTION
1	0C89 21NE6	898.042	F N D RIVET AND SQUARE ALUMINUM PLATE IN A CONCRETE HEADWALL, SOUTHWEST SIDE OF U.S. 95, 0.2 MILES SOUTHEAST OF MILE MARKER 97.
2	A 399 1980	903.287	F N D USC&GS BRASS CAP, IN A PVC WELL, STAMPED "A399 1980", SOUTHWEST SIDE OF U.S. 95., 210' SOUTHEAST OF MILE MARKER 97.
3			
4			
5			
6			
7			
8			
9			
10			
11			

**CLARK COUNTY VERTICAL CONTROL v.2003**

CLARK COUNTY SURVEYOR'S OFFICE  
5051 SOUTH PARADISE ROAD  
LAS VEGAS, NEVADA 89119  
(702) 455-0640

CONVERSION FACTOR:  
METERS X  $\left(\frac{3937}{1200}\right)$  = U.S. SURVEY FEET

REVISED 2003	SHEET 1 OF 1	<b>18-59</b> SW
--------------	-----------------	--------------------